

Processing Record for this file:  
(Make notes here unique for this file)

Loading 3/16-4/1/2014

Data loaded from detarred, unzipped files from the DMF

To reduce Operator need for frequent filter changes, dilution turned on @ 14-02-21 21:12. Every 24-h, the dilution is turned off for 5 minutes. This was not long enough to get an undiluted sample.

As always, data not reported for  $T(\text{blue}) < 0.7$

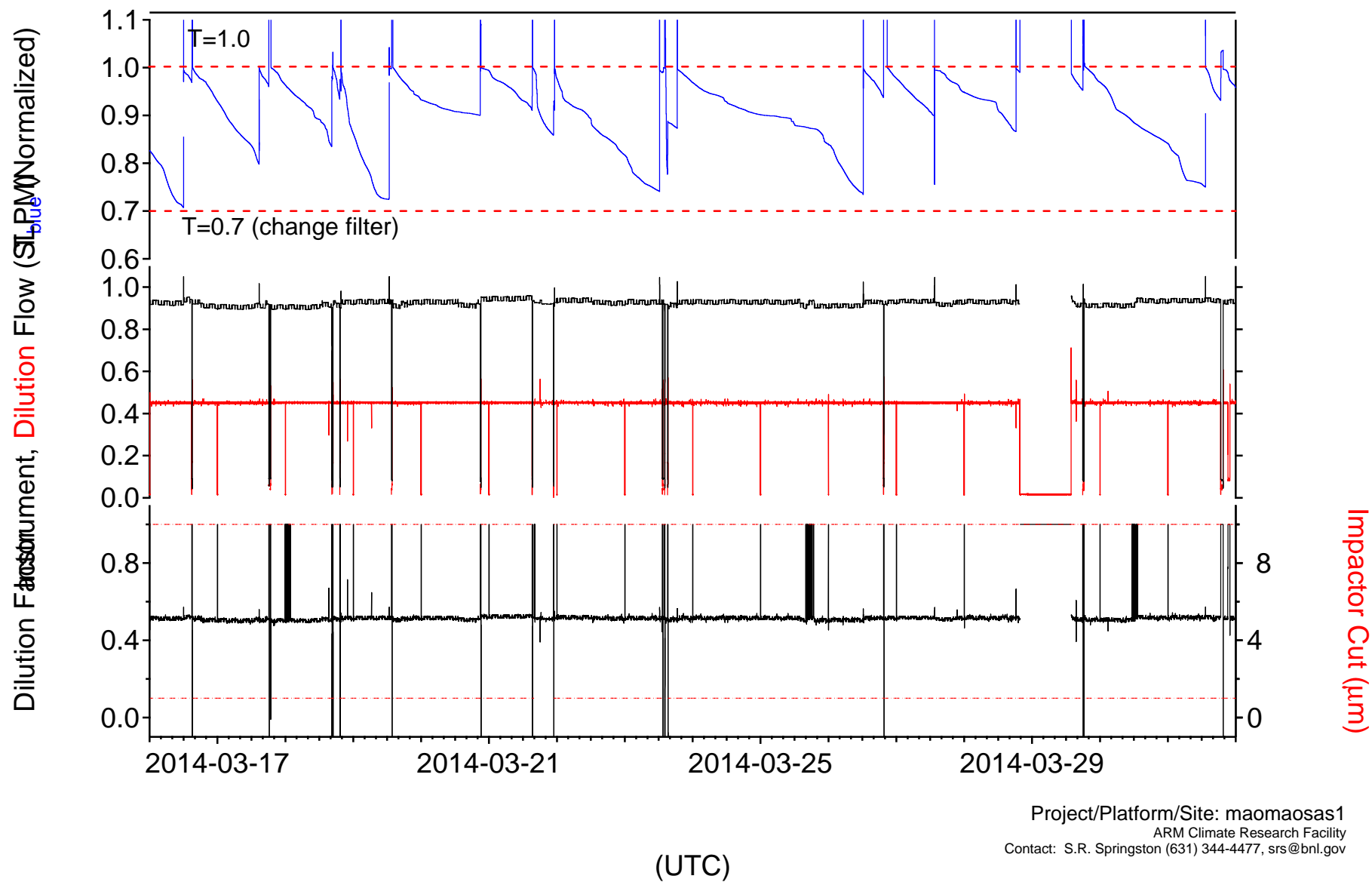
Impactor in place. HOWEVER, signal wired backwards. The 10 and 1 in the primary data files are reversed. This has been corrected here in the Mentor QA/QC'd data files using:

```
root:psap_out:impactor = root:inputfolder:wave11==10 ? 1 : (root:inputfolder:wave11==1 ? 10 :  
root:inputfolder:wave11)
```

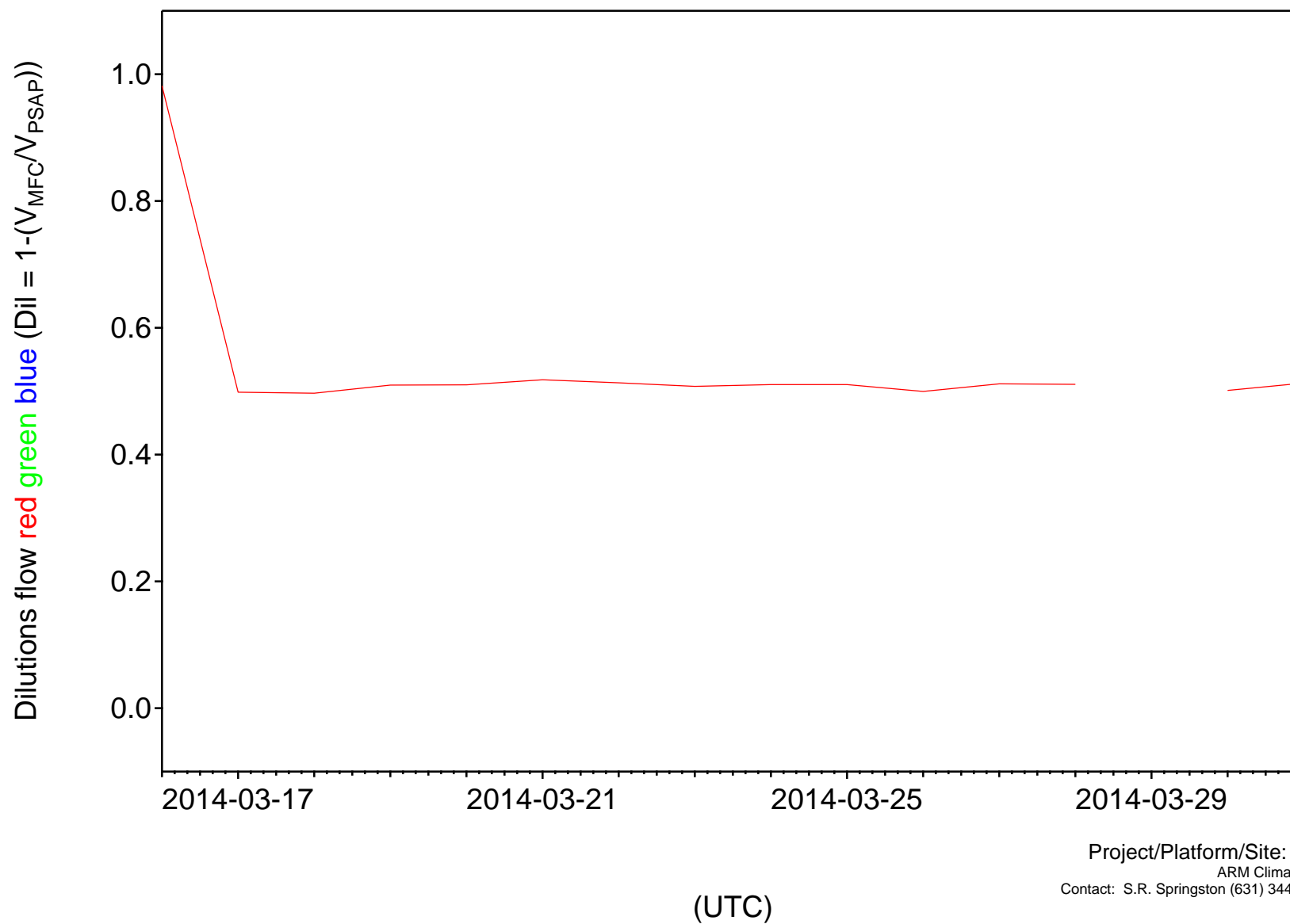
and the following notation put in Comment 1: Impactor polarity reversed in raw file. Corrected here.

Some evidence of supermicron particles. A number of local events resulting in high absorbance. These were not edited.

# Radiance Research PSAP Housekeeping

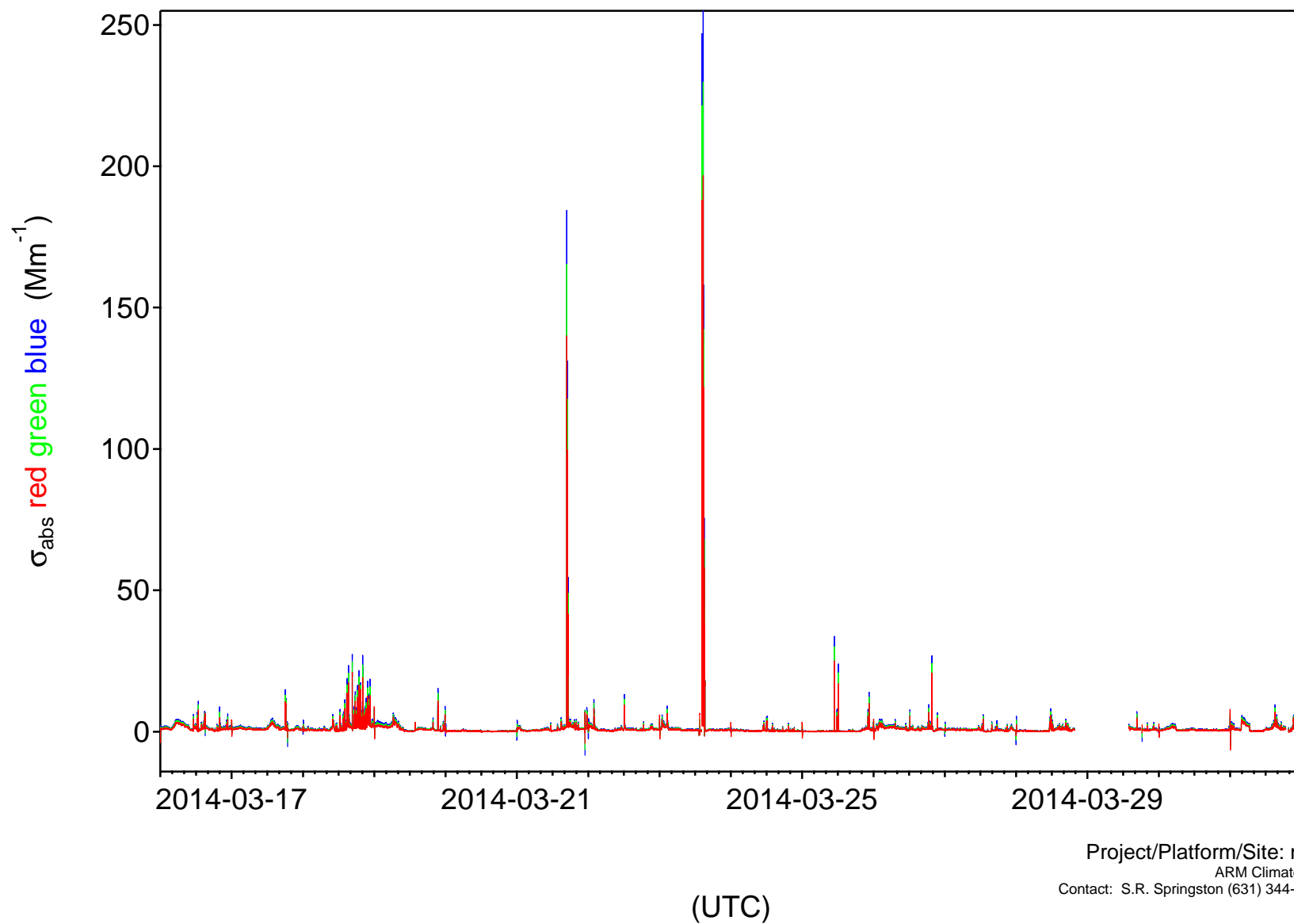


# Radiance Research PSAP

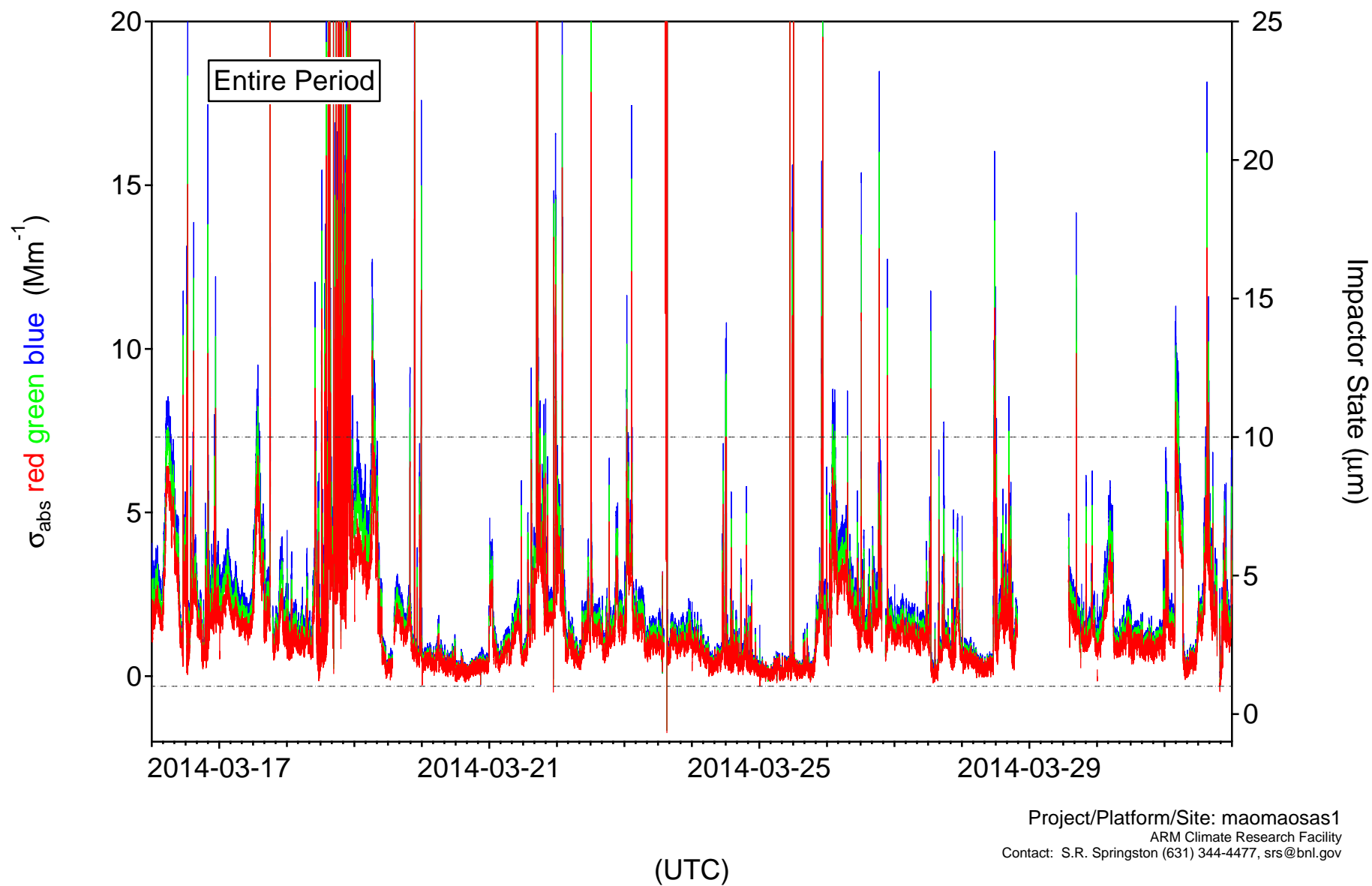


Project/Platform/Site: maomaosas1  
ARM Climate Research Facility  
Contact: S.R. Springston (631) 344-4477, srs@bnl.gov

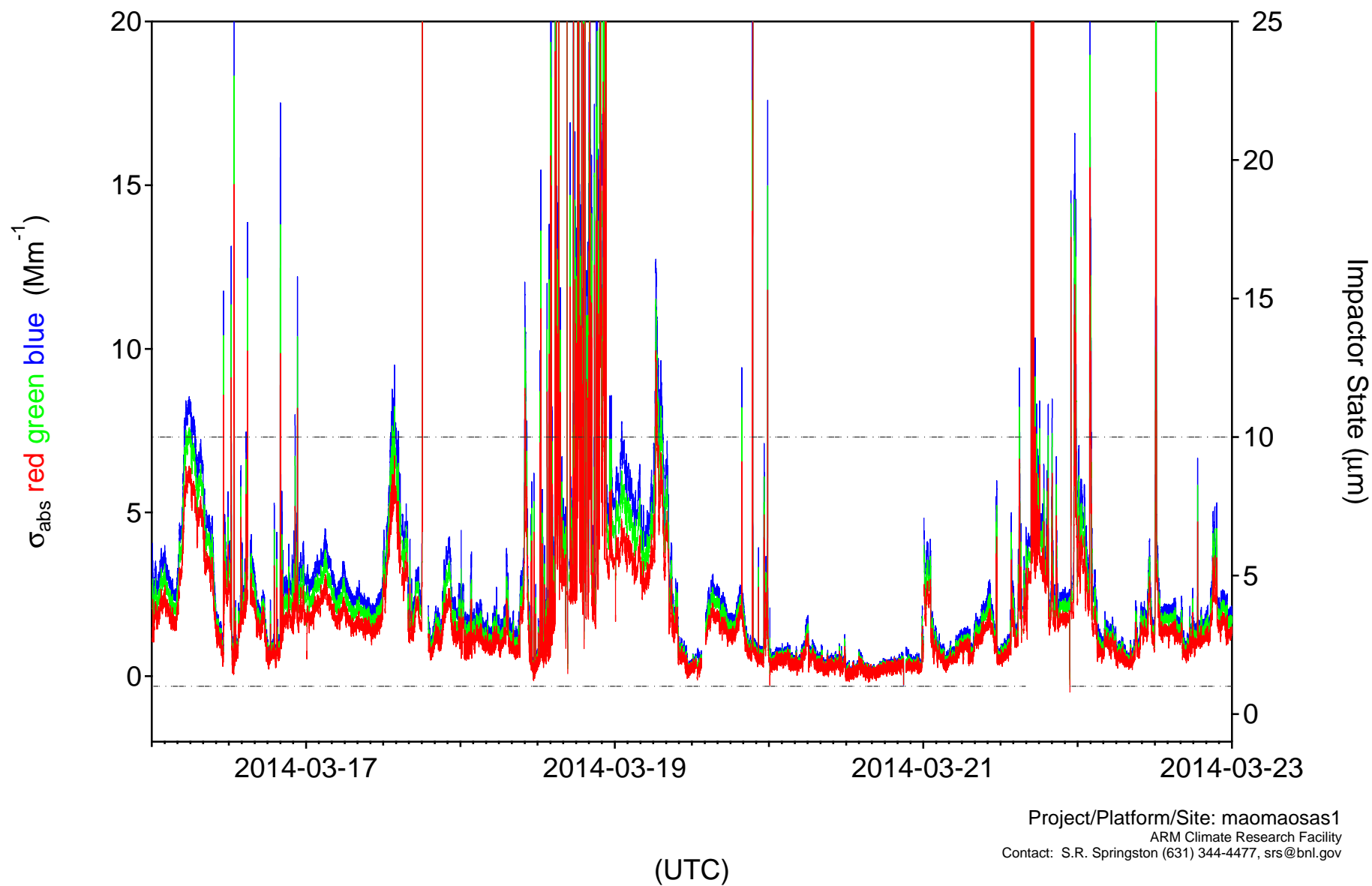
Radiance Research PSAP  
Data w/o dilution factor



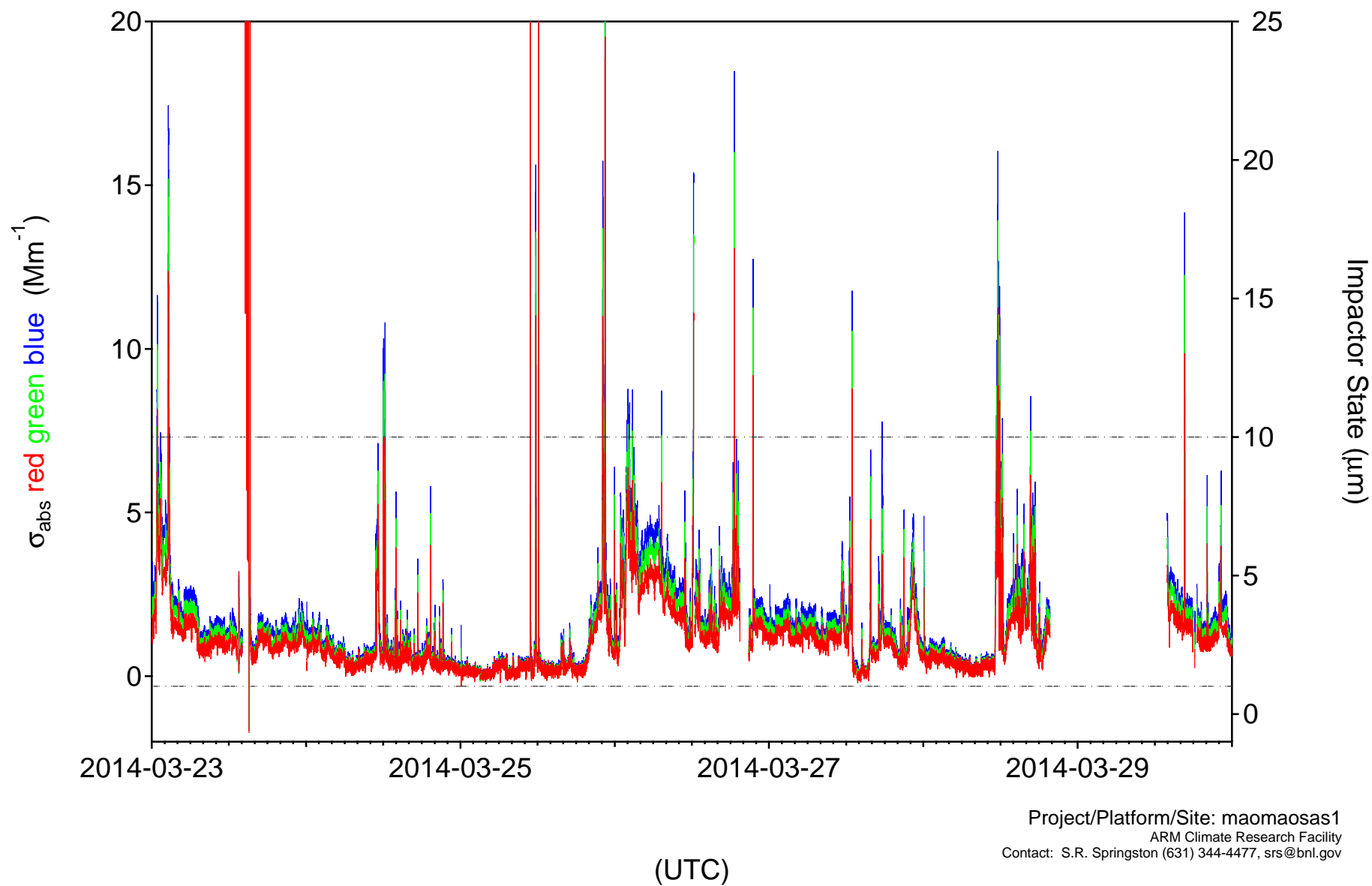
Radiance Research PSAP  
with dilution factor



Radiance Research PSAP  
with dilution factor



Radiance Research PSAP  
with dilution factor



Radiance Research PSAP  
with dilution factor

