

Processing Record for this file:
(Make notes here unique for this file)

Loading 2014-12-01 - 2015-01-01
Data loaded from detarred, unzipped files from the DMF

To reduce Operator need for frequent filter changes, dilution turned on @ 14-02-21 21:12. Every 24-h, the dilution is turned off for 5 minutes. This was not long enough to get an undiluted sample.

As always, data not reported for $T(\text{blue}) < 0.7$

Impactor in place, operational and signals are correct polarity. As confirmation, the flow signal decreases slightly when the impactor is in the 1-um state.

Dilution operational at ~0.5.

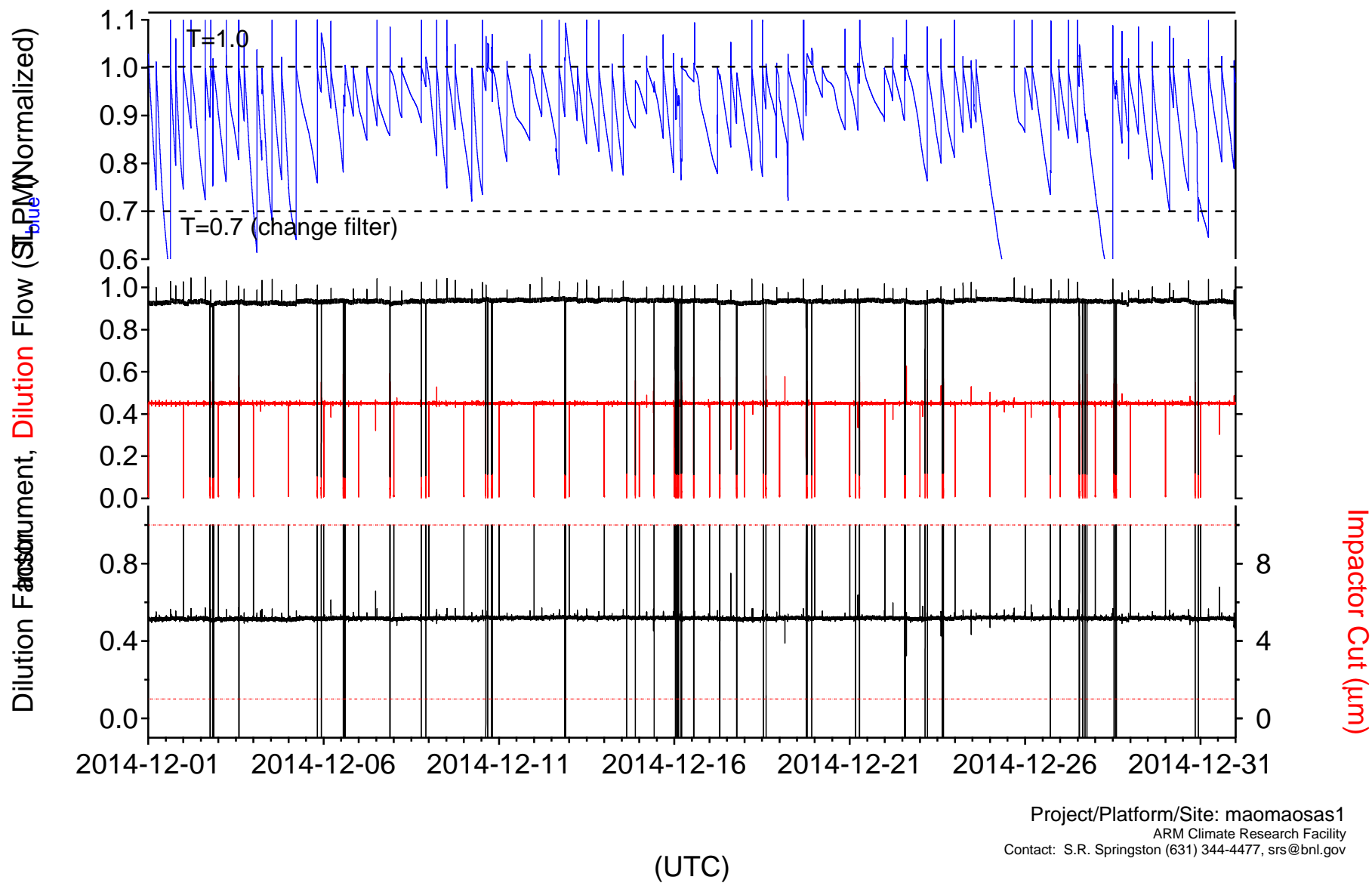
Some evidence of supermicron particles. A number of local events resulting in high absorbance. These were not edited.

Multiple power outages this month. These are not logged numerically so there is no way to reconcile the outage periods to the data output.

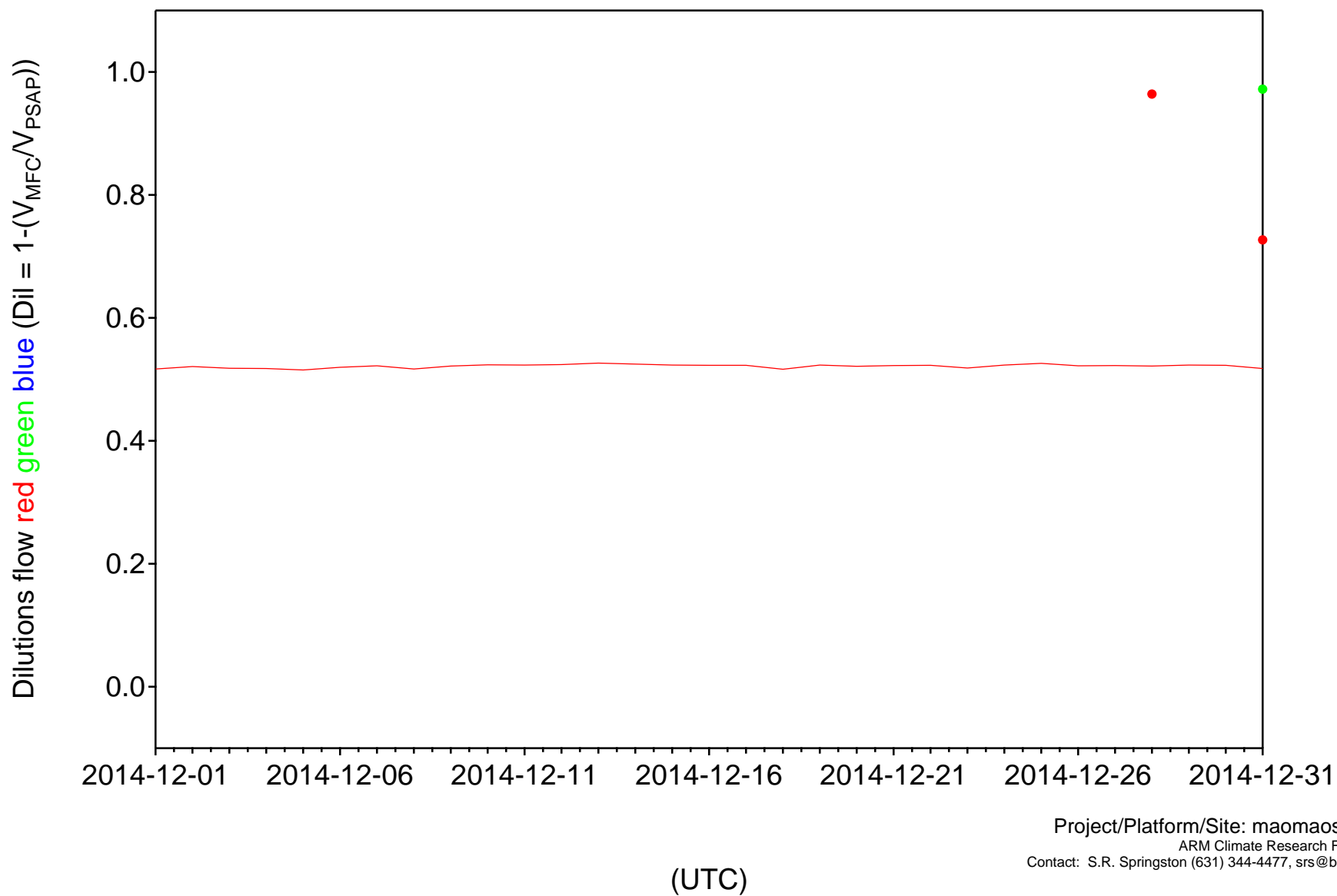
D150114.3 Gaps > 1-h are as follows

2014-12-01 10:28:14, 2014-12-01 15:21:26
2014-12-03 23:59:30, 2014-12-04 02:30:25
2014-12-05 01:33:35, 2014-12-05 05:23:24
2014-12-05 22:24:55, 2014-12-06 00:32:28
2014-12-12 15:03:17, 2014-12-12 17:16:20
2014-12-12 21:13:09, 2014-12-12 23:47:46
2014-12-21 06:38:40, 2014-12-21 08:07:24
2014-12-25 02:54:11, 2014-12-25 16:36:14
2014-12-28 01:44:39, 2014-12-28 12:07:13
2014-12-31 00:46:37, 2014-12-31 05:35:11

Radiance Research PSAP Housekeeping

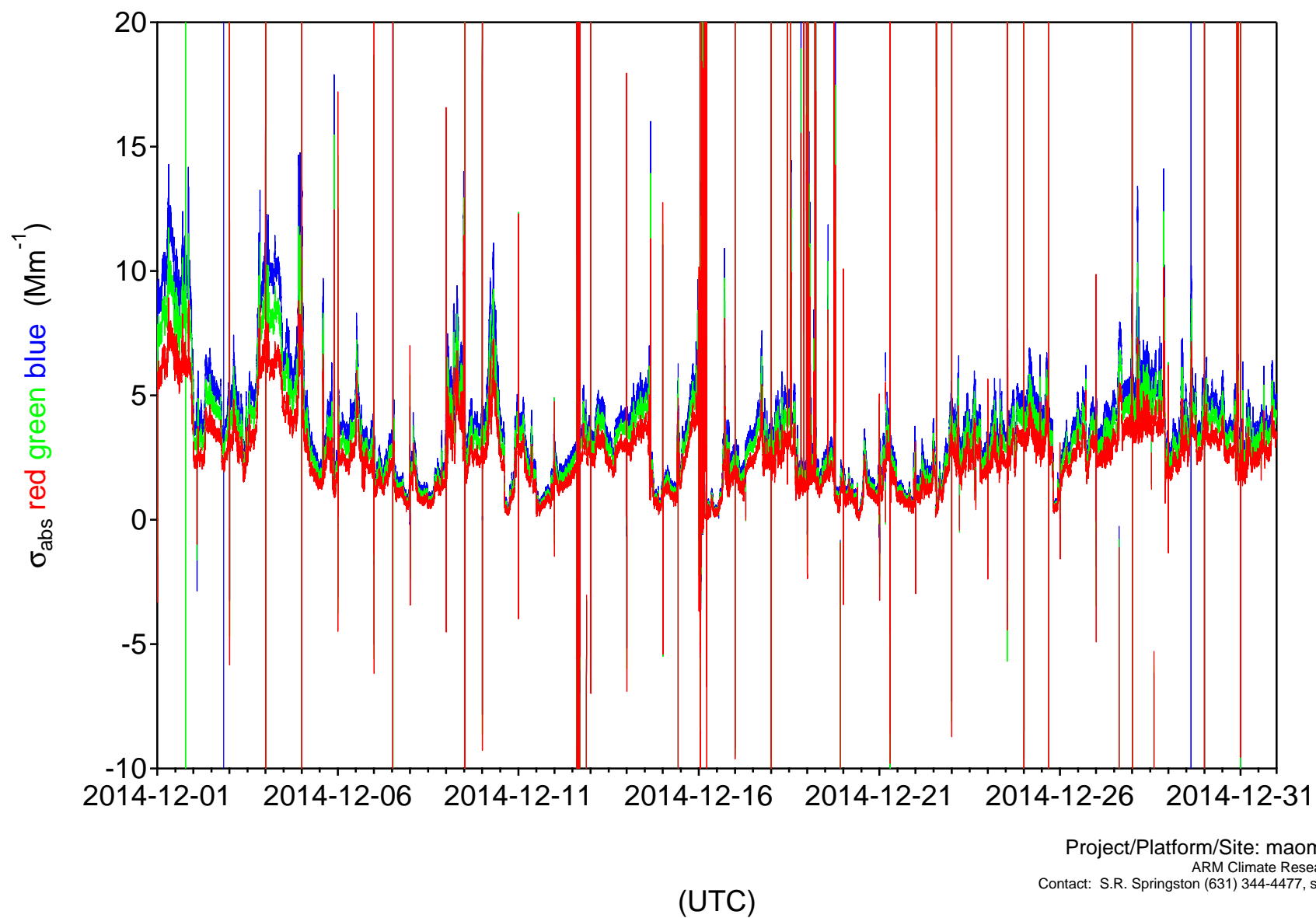


Radiance Research PSAP

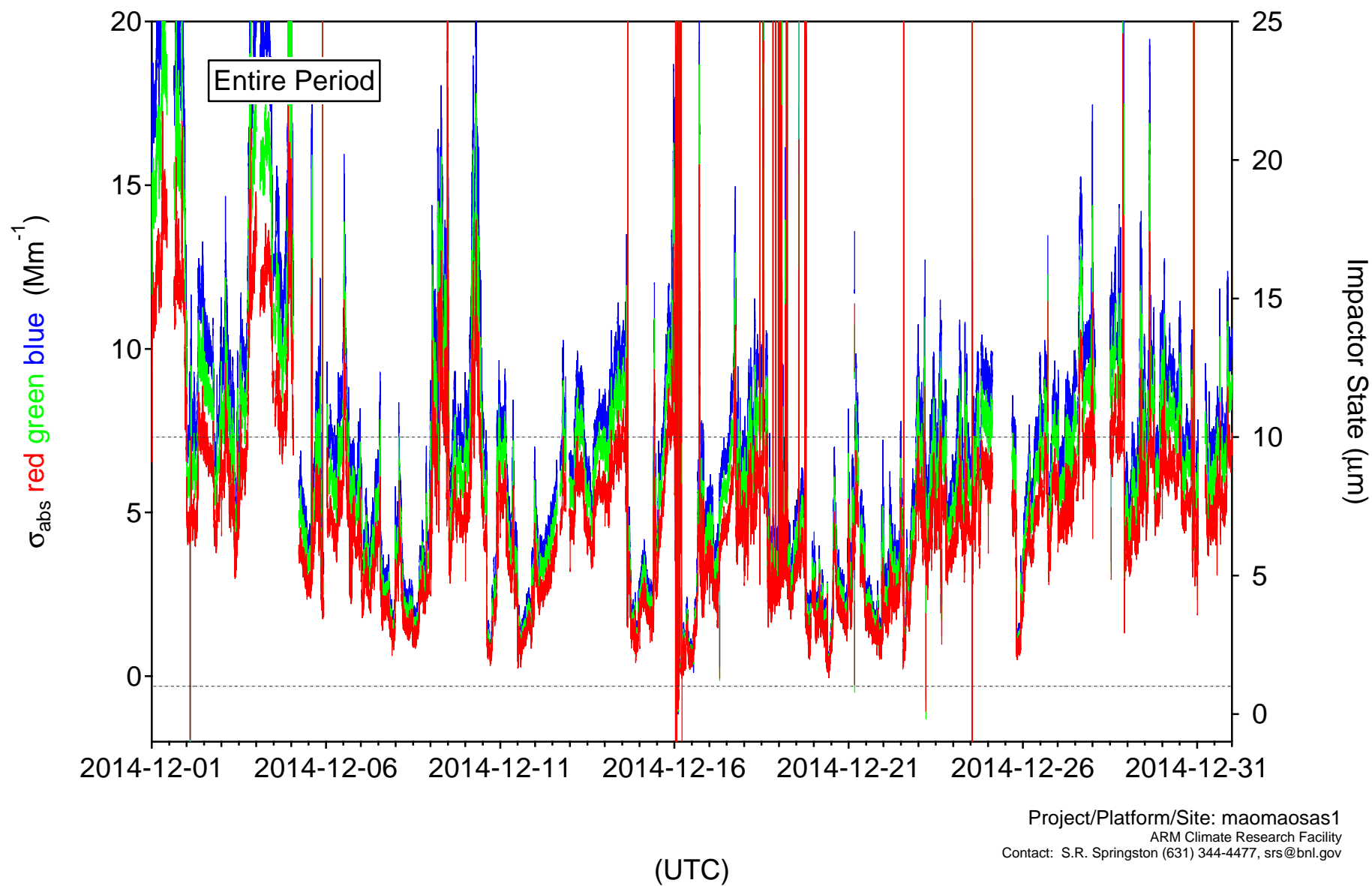


Project/Platform/Site: maomaosas1
ARM Climate Research Facility
Contact: S.R. Springston (631) 344-4477, srs@bnl.gov

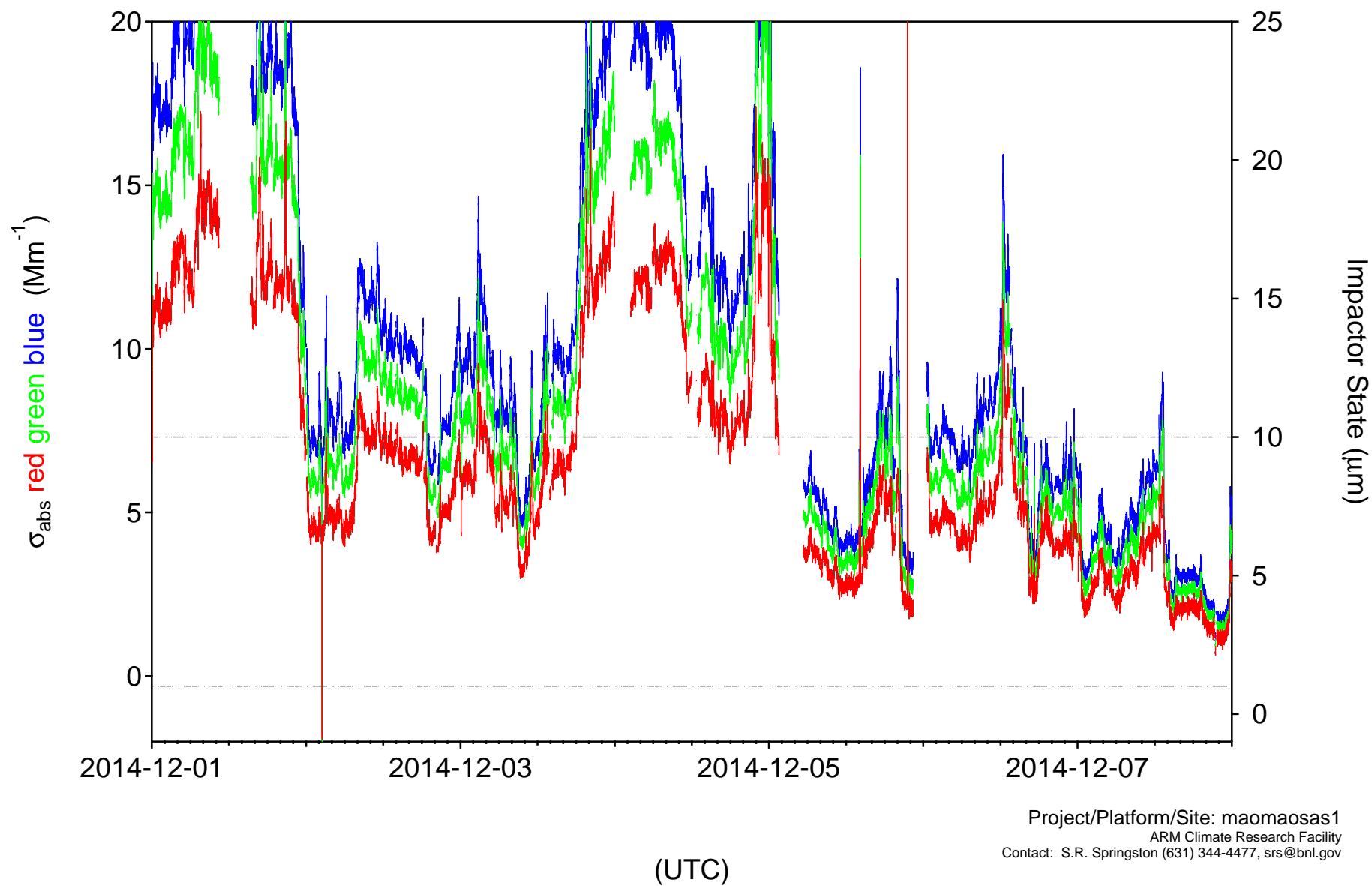
Radiance Research PSAP
Data w/o dilution factor



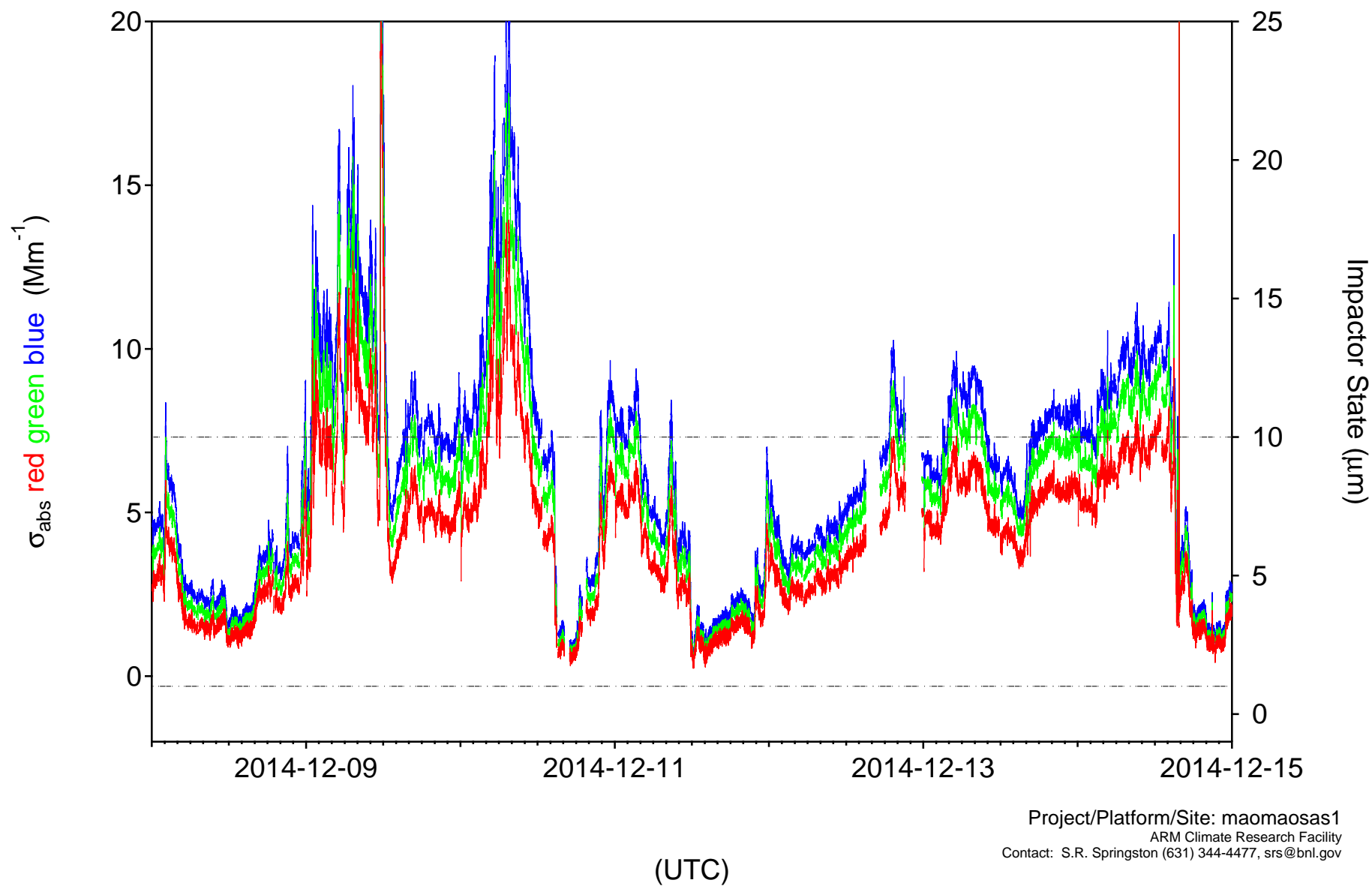
Radiance Research PSAP
with dilution factor



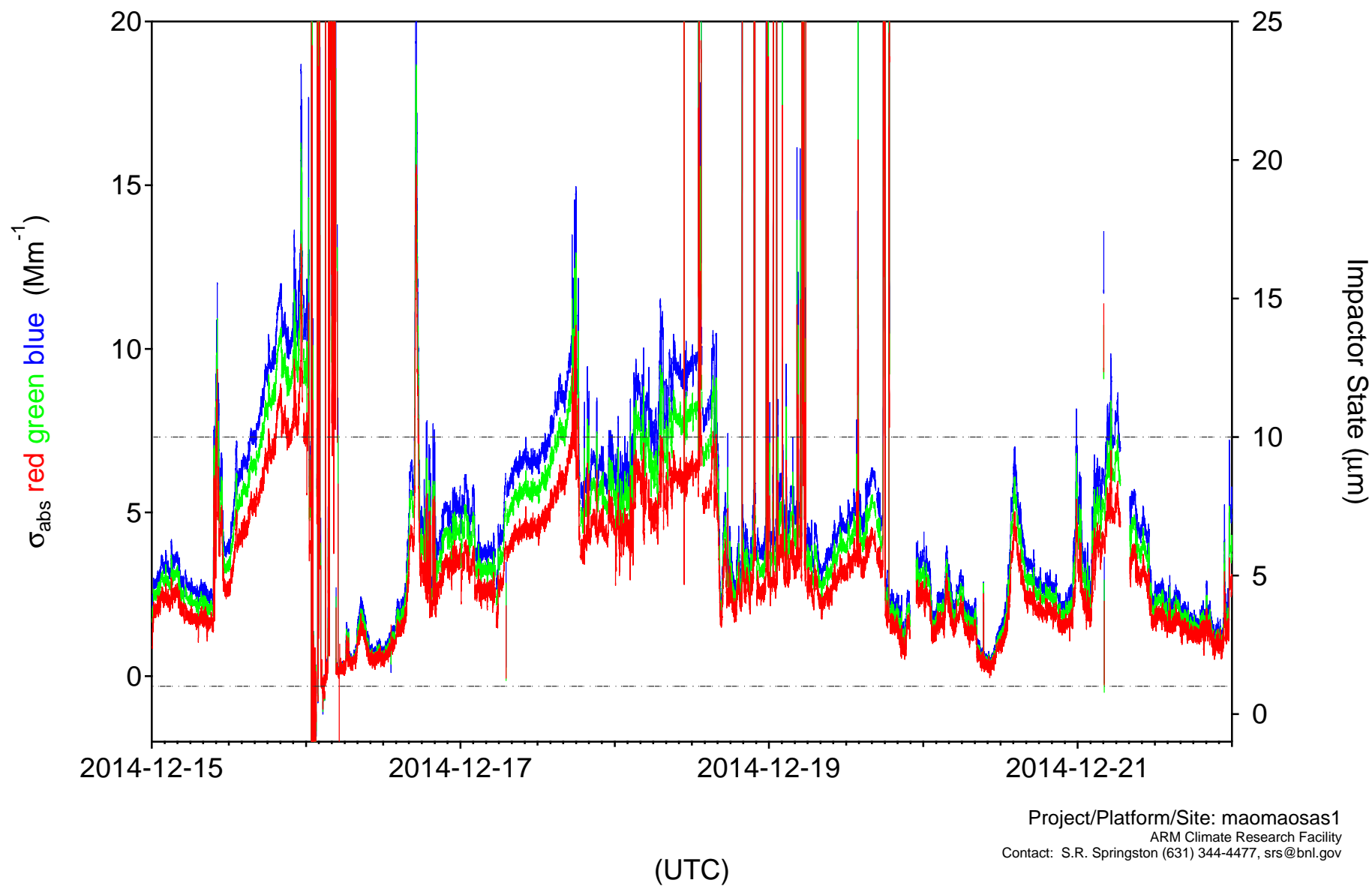
Radiance Research PSAP
with dilution factor



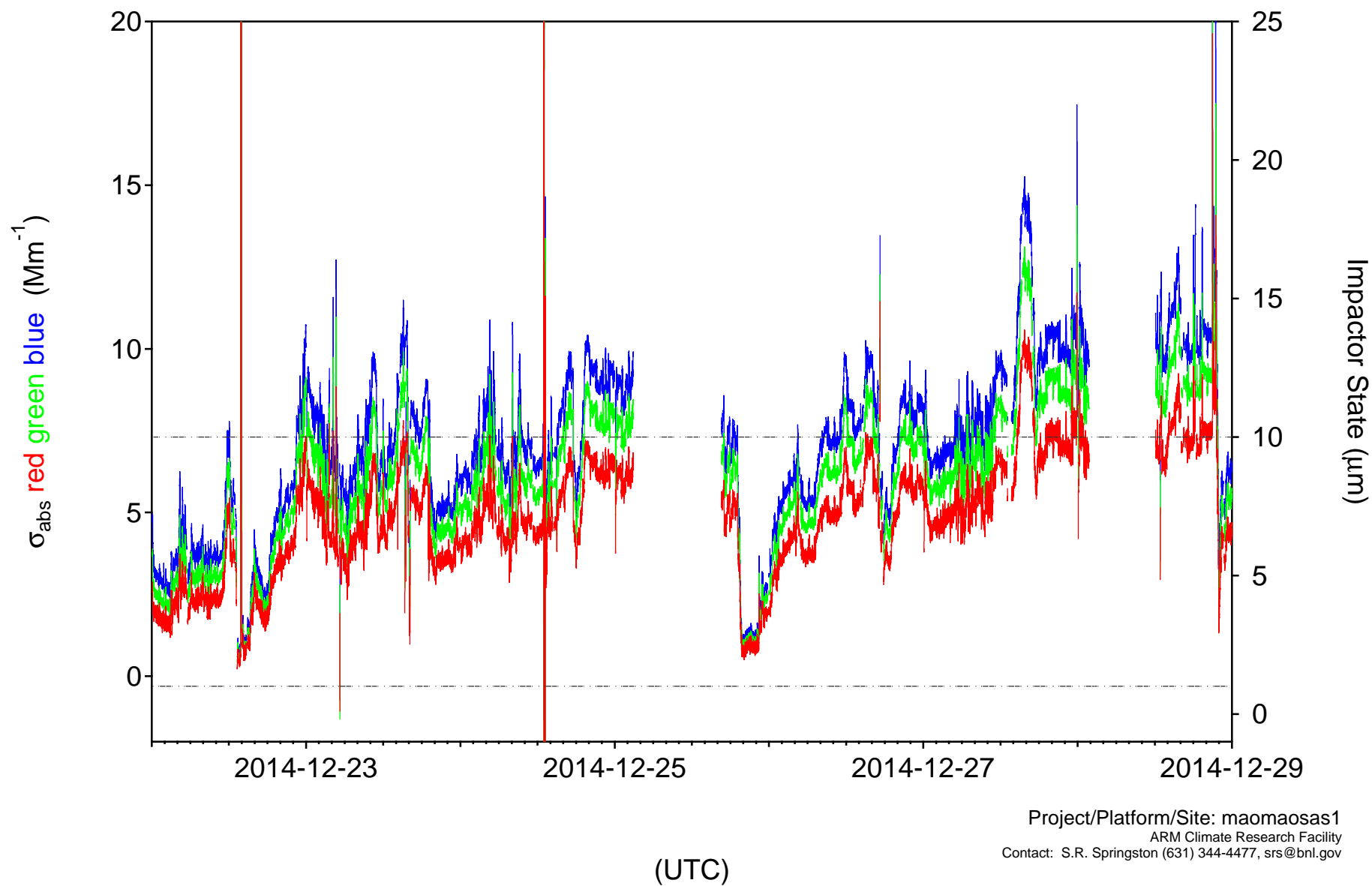
Radiance Research PSAP
with dilution factor



Radiance Research PSAP
with dilution factor



Radiance Research PSAP
with dilution factor



Radiance Research PSAP
with dilution factor

